


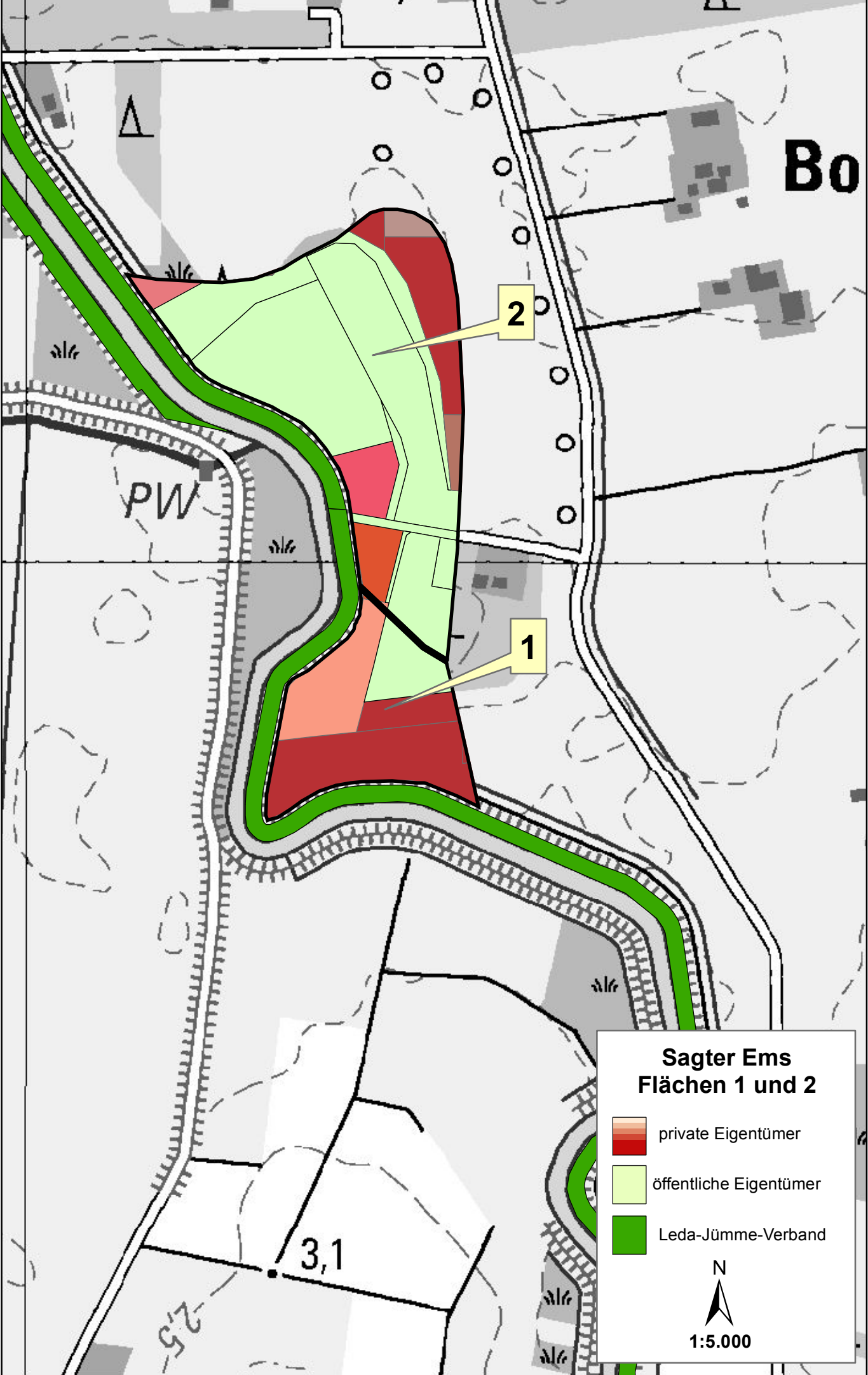



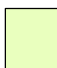

**Soeste  
Fläche 18**

-  private Eigentümer
-  öffentliche Eigentümer
-  Leda-Jümme-Verband

N  
1:5.000



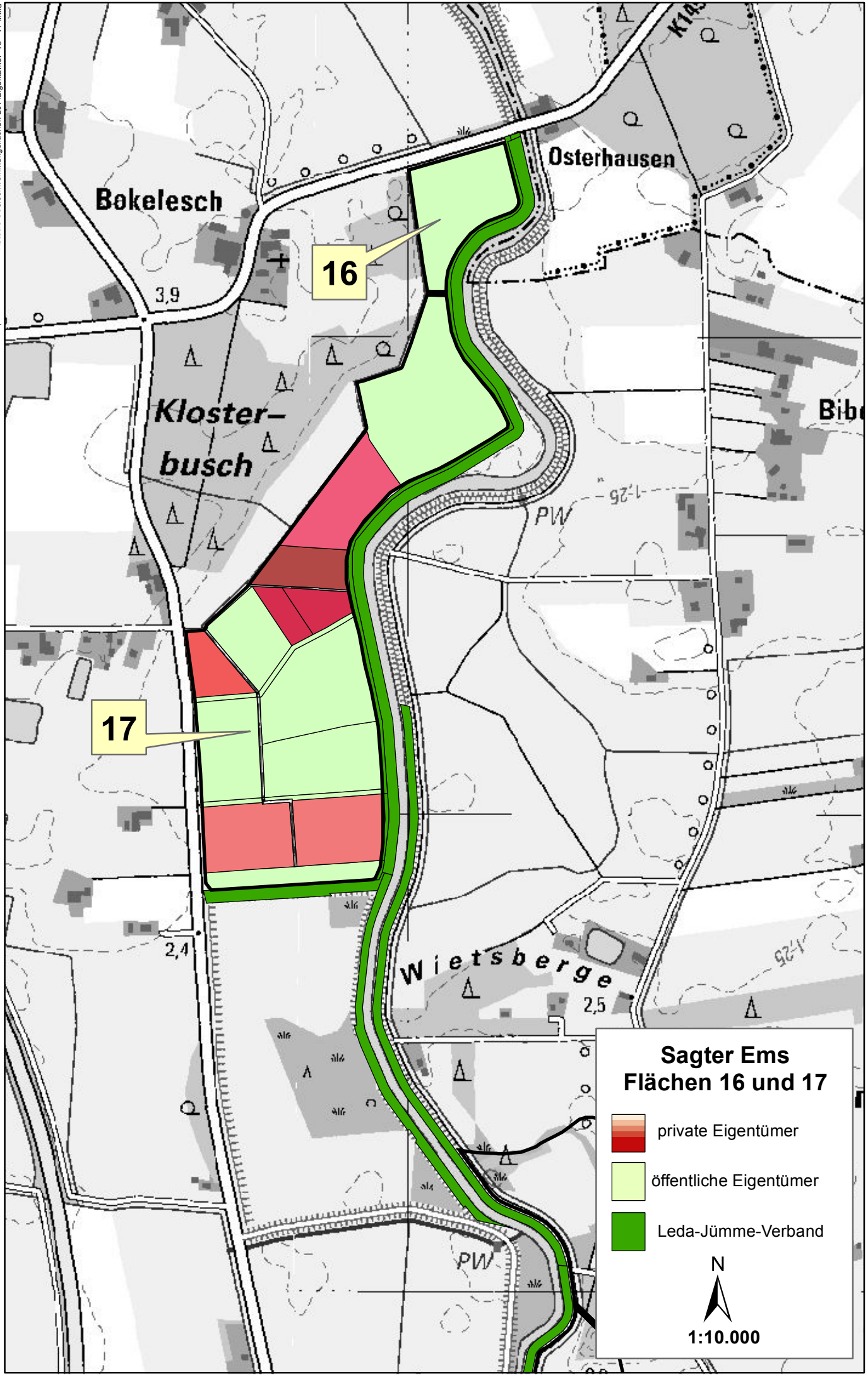
### Sagter Ems Flächen 1 und 2

-  private Eigentümer
-  öffentliche Eigentümer
-  Leda-Jümme-Verband



1:5.000





N  
1:10.000