

## Project structure and Co-operative Working

The project is structured so that there is collaboration on all levels. There is an overarching international steering group, which brings together ideas and information between the UK and Lower Saxony. Each country also has a national steering group which leads the project as well as engaging with policy makers, politicians and academics and aims to promote the project to the wider community. Work on individual tasks is undertaken by working and expert groups with intensive participation from farmers, academia and civil servants involved in WFD and agri-environment schemes. Local groups, e. g. farmer and stakeholders ensure that solutions proposed are practical and recognise multiple benefits and linkages to other projects and programmes being undertaken by local organisations.

## Project Partners

The German project partners are:

- Ministry for Environment (MU): Cofinancer
- Lower Saxony Water Management, Coastal Defence and Nature Conservation Agency (NLWKN): Beneficiary, Overall Coordinator
- Federal Agricultural Research Centre (FAL)
- Lower Saxony Chamber of Agriculture (LWK)
- Research Centre Jülich (FZJ)
- State Agency for Mining, Energy and Geology (LBEG)

The UK project partners are:

- Department for Environment, Food and Rural Affairs (Defra): Cofinancer
- UK Water Industry Research (UKWIR): UK Coordinator
- ADAS UK Ltd. (ADAS)
- Environment Agency (EA)
- National Farmers Union (NFU)
- Wessex Water Services Limited (WW)

## For further information:

WAgriCo Overall Coordination  
Dr. Astrid Krüger  
NLWKN- Head Office  
Am Sportplatz 23  
26506 Norden  
Phone: 0049 511 3034 3053  
[Astrid.Krueger@nlwkn-dir.niedersachsen.de](mailto:Astrid.Krueger@nlwkn-dir.niedersachsen.de)  
[www.nlwkn.de](http://www.nlwkn.de)

WAgriCo Technical Coordination  
Hubertus Schültken  
NLWKN- Office Hannover-Hildesheim  
Göttinger Chaussee 76 A  
30453 Hannover  
Phone: 0049 511 3034 3016  
[Hubertus.Schueltken@nlwkn-h.niedersachsen.de](mailto:Hubertus.Schueltken@nlwkn-h.niedersachsen.de)

WAgriCo UK Coordination  
Roger Trengove  
UKWIR Ltd  
97 Exeter Road  
Dawlish  
EX7 0AG  
Phone: 0044 1626 864 173  
[rogert@rgtffreelance.co.uk](mailto:rogert@rgtffreelance.co.uk)

Project websites:  
[www.wagrigo.de](http://www.wagrigo.de)  
[www.wagrigo.org](http://www.wagrigo.org)



This project is being commissioned by the European Union under the LIFE programme



## WAgriCo

## Water Resources Management in Cooperation with Agriculture

Compilation and Implementation of Integrated Programmes of Measures according to the Water Framework Directive (WFD) to Reduce Diffuse Pollution from Agriculture



Niedersachsen

## WAgriCo

The aim of the WAgriCo project is to develop a possible suite of measures or solutions which can be implemented in agri-environmental schemes to achieve and/or sustain good water quality, according to the WFD. This project follows on from other successful co-operative work on water protection, such as Lower Saxony's 'Water Protection Areas', which have been running for over 10 years and the work undertaken by the Voluntary Initiative on pesticides in the UK. The focus here is to demonstrate the large-scale use of enhanced measures and innovative cooperative approaches.

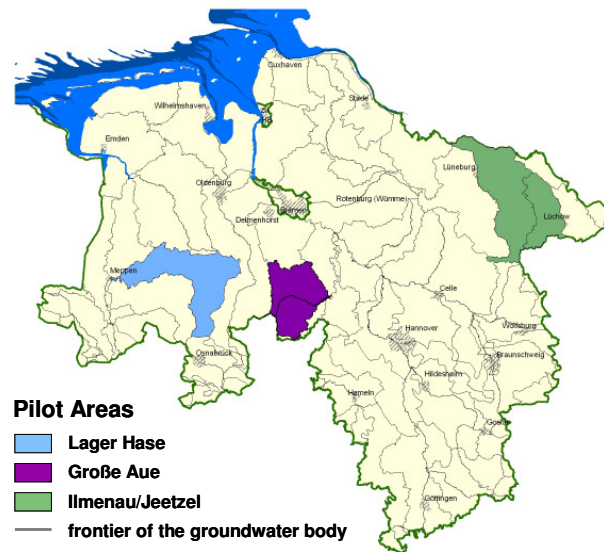
### Expected results of the project:

- Development and dissemination of best practice in terms of approaches to ensure farmer and stakeholder engagement and involvement
- Promotion for the replication of the WAgriCo approaches in other EU Member States
- Production of a tool-box of measures for farmers, land and water managers to reduce diffuse pollution cost effectively
- Development of an innovative results orientated approach: The objective is to reward farmers for the improvement of nutrient management on farm level
- Proposals for water protection options that can be integrated into agri-environmental schemes to support sustainable water resources management in the EU
- An assessment of the costs associated with large scale programmes of measures to protect the water environment
- Production of information for different audiences, e.g. policymakers, planning authorities and farmers
- A model for cross sector collaboration which can be replicated elsewhere in the EU to enhance water protection from the local level right through to national policy making

## The pilot areas in Lower Saxony

According to the initial characterisation of the WFD nearly 70% of groundwater in Lower Saxony is affected by diffuse pollution from agriculture. This does not mean that Nitrate drinking water quality standards are exceeded but the chemical status of groundwater is decreased in special groundwater bodies.

The representative pilot areas Lager Hase, Große Aue, Ilmenau/Jeetzel approximately cover 300 000 hectares of agricultural land. This is some 65 to 77% of the total area in the pilot areas.

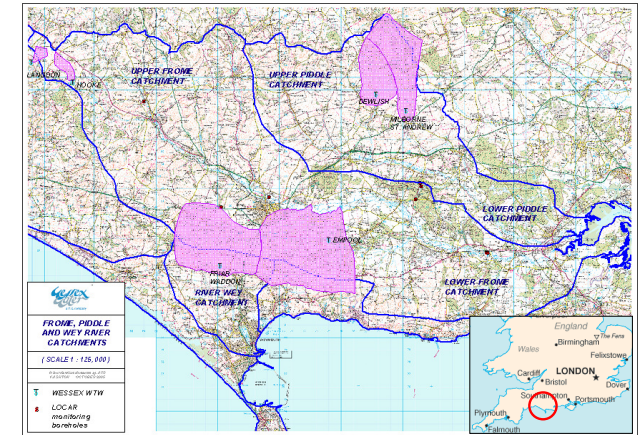


The following table gives a short overview about the agricultural structure in the pilot areas in Lower Saxony.

Pilot Area	Lager Hase	Große Aue	Ilmenau/Jeetzel
Area (sq. km)	1420	1517	2052
Number of Farms	3000	1620	1640
Animal Husbandry	67%	44%	27%
Arable	14%	24%	68%
Other	19%	32%	5%

## The pilot areas in UK

In the UK, the WAgriCo project is centred on the river catchments of the Frome, Piddle and Wey in South Dorset. The River Frome rises in the Dorset Downs and flows east through Dorchester before it enters into Poole Harbour at Wareham. The River Piddle rises at Alton Pancras, near Buckland Newton, and flows south east before entering Poole Harbour very close to the location of the River Frome. The River Wey is the shortest of the three rivers and has its source in the South Dorset Downs and flows into Weymouth Bay.



The WAgriCo study areas within the catchment, shown pink on the catchment plan, are based upon the groundwater catchment areas of the boreholes at Empool, Hooke and Langdon in the Frome catchment, Dewlish and Milborne St Andrew in the Piddle Catchment and Friar Waddon in the Wey catchment. These catchments are typical for the area in that they are predominately rolling hillside with few flat fields. The majority of farms within the priority catchments fall within the Nitrate Vulnerable Zone so the amount of organic nitrogen fertiliser (manures/slurries) applied are regulated.

Pilot Catchment	Frome	Piddle	Wey
Area (sq. km)	373,3	179,3	7,3
Number of Farms	450	200	15
Animal Husbandry	42%	37%	42%
Arable	37%	45%	42%
Other	21%	18%	16%