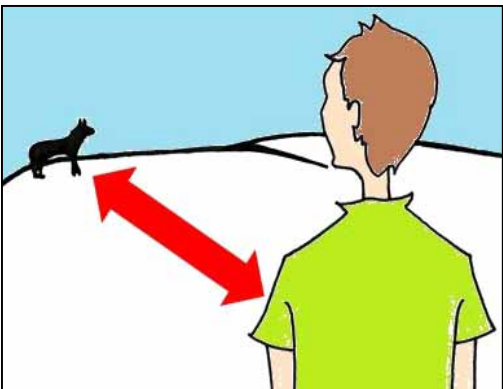


# The wolf – wild animal in your neighbourhood

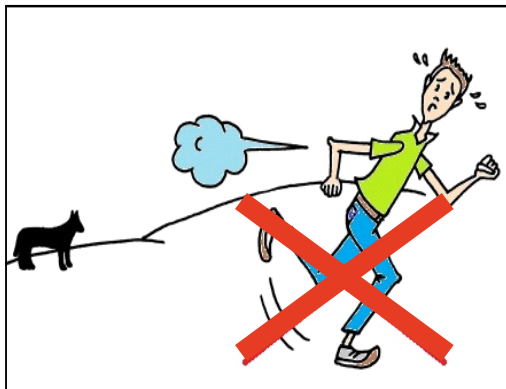
In recent years wolves have returned to Lower Saxony. In general they do not pose any danger to humans. The animals tend to steer clear of humans, with young wolves possibly being a little more curious than adult wolves.

The wolf does not connect cars and houses with human beings, hence the wolf does not perceive these as a threat. Wolves use urban areas as parts of their normal habitat, mainly at night or during twilight hours, and sometimes even during the day.

Attention: Those who feed wolves make them get used to this easy way of sourcing food. As a result, wolves can start pestering for food, become a nuisance and in the end, may become dangerous. Hence: Never feed wolves!



**Keep your distance!**



**Don't run away!**



**Don't feed!**

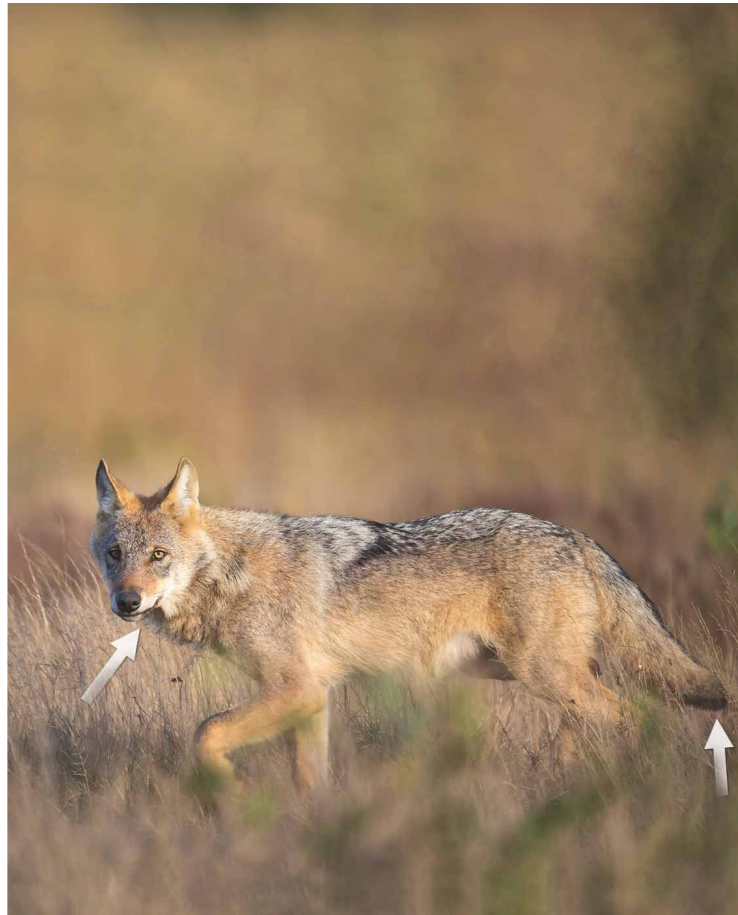


**Dispose of your litter properly!**



## A wolf – what now?

- Stay calm and keep your distance.
- Don't run away – instead slowly walk backwards.
- If you feel uneasy, draw attention to yourself by shouting and clapping your hands, for instance.
- Do not feed the wolf under any circumstances!
- Don't leave any litter and leftover food lying around!



## Wolf or hound?

A wolf is roughly the same size as a German shepherd dog: Shoulder height 60 - 90 cm. Two features in particular mark it out as a wolf:

- The coat is greyish brown and underneath the snout it's white.
- The tail is short and it's black at the tip.

The wolf is a pack animal. A pack consists of the parents, young wolves and usually around 4 to 6 cubs. The young animals leave the pack from 11 to 22 months old, so a pack's size never really gets any bigger.

Information on wolves can be found on the wolf website:



[www.der-wolf-in-niedersachsen.de](http://www.der-wolf-in-niedersachsen.de)

You can find local contacts via the Wolfsbüro:



[www.wolfsbuero.nlwkn.niedersachsen.de](http://www.wolfsbuero.nlwkn.niedersachsen.de)

## Disclaimer/Imprint:

Niedersächsischer Landesbetrieb für Wasserwirtschaft, Küsten- und Naturschutz (NLWKN) – Nature Conservation – Göttinger Chaussee 76A, 30453 Hannover  
wolfsbuero@nlwkn-h.niedersachsen.de;  
Tel.: 0511 3034 3034  
Text and Design: Wolfsbüro  
Images: J. Borris, Illustrations: C. Steinberg